

Smart System for the Plant Diseases Identification

**Prof. Dhanshree B. Pohare¹, Pritam B. Nimkar², Ishwari S. Mahalle³,
Priya S. Godghate⁴, Sanket N. Bhujade⁵**

¹Head. of Dept. Department of E&TC Engineering, Jagadambha College of Engineering and Technology Yavatmal.

²Student (UG) Department of E&TC Engineering, Jagadambha College of Engineering and Technology Yavatmal.

³Student (UG) Department of E&TC Engineering, Jagadambha College of Engineering and Technology Yavatmal.

⁴Student (UG) Department of E&TC Engineering, Jagadambha College of Engineering and Technology Yavatmal.

⁵Student (UG) Department of E&TC Engineering, Jagadambha College of Engineering and Technology Yavatmal.

Email: ¹dhanashree15@gmail.com, ²pritamnimkar@gmail.com,
⁴priyagodghate06@gmail.com, ⁵ishumahalle12@gmail.com, ⁵bhujadesanket9@gmail.com

Abstract

The health of plants is crucial for agricultural productivity and food security. Early detection of plant diseases can significantly mitigate the impact of diseases on crop yields. This paper presents a novel plant disease detection system that leverages machine learning and image processing techniques to identify and diagnose plant diseases. The system utilizes a convolutional neural network (CNN) to analyse images of plant leaves, distinguishing between healthy and diseased specimens. By employing a comprehensive dataset of plant images, the model is trained to recognize various diseases and provide accurate diagnostics. The system offers real-time detection capabilities, which can be integrated into mobile applications for field use. This approach aims to enhance disease management practices, reduce reliance on manual inspections, and ultimately support sustainable agricultural practices.

Keywords: Plant Disease Detection, CNN, Precision Agriculture, Real-time Detection, Computer Vision, Machine Learning, Crop Health Monitoring.

1. INTRODUCTION

Agriculture plays a vital role in ensuring food security and supporting the global economy. The health of crops is a key factor influencing agricultural productivity, and plant diseases are one of the major threats that significantly reduce crop yield and quality. Traditional methods of disease detection rely heavily on manual inspection by experts, which is time-consuming, labor-intensive, and often prone to human error. Moreover, in rural and remote areas, access to agricultural experts is limited, making early diagnosis even more challenging.

With the advancement of technology, artificial intelligence (AI) and machine learning (ML) have emerged as powerful tools in addressing agricultural challenges. In particular, image processing and deep learning techniques have shown great potential in automating the process of plant disease detection. Convolutional Neural Networks (CNNs), a class of deep learning models, are especially effective in analyzing visual data and have been widely used for image classification tasks.

This research focuses on the development of an automated plant disease detection system that utilizes CNN-based models to analyze images of plant leaves. By training the model on a diverse dataset of healthy and diseased plant images, the system is capable of accurately identifying various plant diseases. The proposed system also supports real-time detection, allowing farmers to diagnose crop conditions instantly using mobile applications.

The implementation of such intelligent systems can significantly improve disease management practices, reduce dependency on manual monitoring, and minimize crop losses. Furthermore, it promotes precision agriculture and supports sustainable farming practices by enabling timely and informed decision-making. This study aims to contribute to the growing field of smart agriculture by providing an efficient, scalable, and accessible solution for plant disease diagnosis.

2. PROBLEM STATEMENT

Plant diseases are a major challenge in agriculture, significantly affecting crop productivity, quality, and overall food security. Early and accurate detection of these diseases is crucial to prevent their spread and minimize economic losses. However, traditional methods of disease identification rely heavily on manual inspection by agricultural experts, which is not only time-consuming and labor-intensive but also costly and often unavailable in rural and remote areas. Additionally, human observation can be subjective and prone to errors, particularly when diseases exhibit similar visual symptoms or are in their early stages of development. The lack of efficient, scalable, and real-time monitoring systems further complicates the timely diagnosis of plant diseases, making it difficult for farmers to take immediate corrective actions. As a result, delayed or inaccurate detection can lead to severe crop damage and reduced yield. Therefore, there is a strong need for an automated, reliable, and real-time plant disease detection system that utilizes advanced technologies such as machine learning, deep learning, and image processing to accurately analyze plant leaf images. Such a system should be capable of providing quick and precise diagnostics and be easily accessible through mobile applications, thereby enabling farmers to make informed decisions, improve disease management practices, and promote sustainable agriculture.

3. PROPOSED METHODOLOGY

The proposed system for plant disease detection is based on a deep learning approach that utilizes Convolutional Neural Networks (CNNs) to automatically identify and classify diseases from plant leaf images. The methodology begins with the collection of a comprehensive dataset containing images of both healthy and diseased plant leaves. These images are then preprocessed to improve quality and consistency, which includes resizing, normalization, and noise removal. Data augmentation techniques such as rotation, flipping, and scaling are also applied to increase dataset diversity and enhance model performance.

Once preprocessing is completed, the dataset is divided into training and testing sets. A CNN model is then designed and trained using the training dataset to learn important features such as color, texture, and patterns associated with different plant diseases. The trained model is evaluated using the testing dataset to measure its accuracy and performance. After successful training, the model is integrated into a user-friendly system that enables real-time disease detection,

The system allows users to capture or upload images of plant leaves through a mobile application. These images are processed by the trained CNN model, which predicts whether the plant is healthy or affected by a specific disease. The results are then displayed to the user

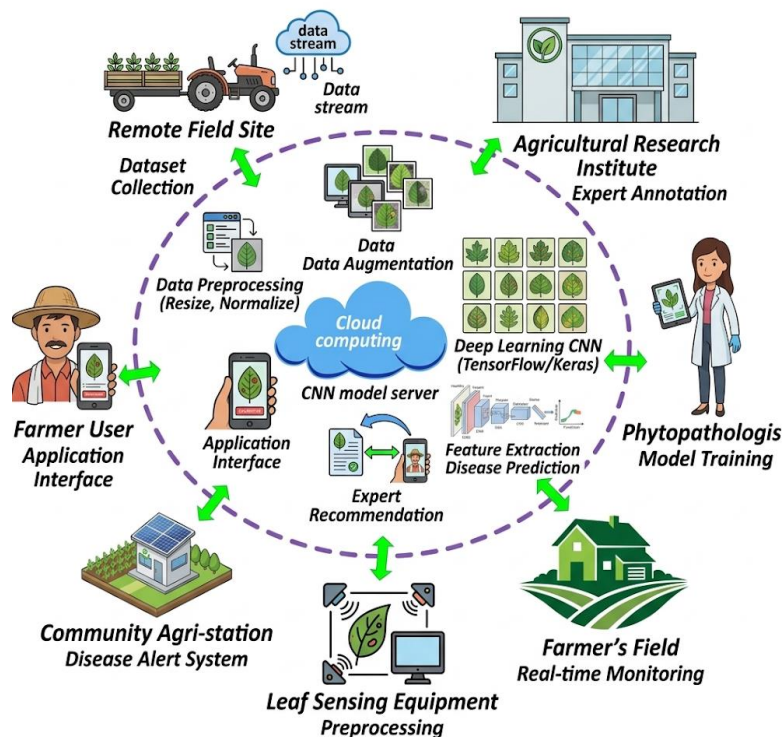
along with possible recommendations for disease management. This approach ensures fast, accurate, and efficient detection, reduces dependency on manual inspection, and supports precision agriculture and sustainable farming practices.

4. SYSTEM IMPLEMENTATION

The implementation of the proposed plant disease detection system is carried out using a combination of image processing techniques and deep learning models. The system is divided into multiple stages to ensure efficient and accurate disease detection.

Initially, a dataset of plant leaf images containing both healthy and diseased samples is collected from reliable sources. The dataset undergoes preprocessing steps such as image resizing, normalization, and noise reduction to ensure uniformity and improve model performance. Data augmentation techniques, including rotation, flipping, and scaling, are applied to increase the diversity of the dataset and prevent overfitting.

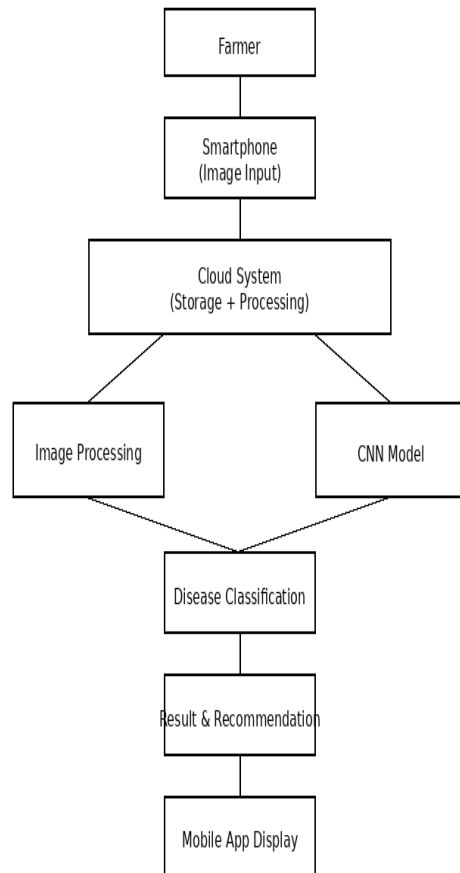
The core component of the system is a Convolutional Neural Network (CNN), which is implemented using deep learning frameworks such as TensorFlow or Keras. The model is trained on the processed dataset to learn important features like color variations, texture patterns, and disease-specific spots on leaves. After training, the model is tested using unseen data to evaluate its accuracy and efficiency.



For real-time usage, the trained model is deployed on a cloud-based platform, enabling scalable and fast processing. A mobile application interface is developed through which users (farmers) can capture or upload images of plant leaves. These images are sent to the cloud server, where the CNN model processes them and predicts the disease type or identifies the plant as healthy. The results, along with basic recommendations for disease management, are then displayed on the user's mobile device. This implementation ensures real-time detection, ease of access, and minimal dependency on manual inspection, making the system highly effective for practical agricultural use.

5. WORKFLOW OF PROPOSED MODEL

The flowchart represents the step-by-step working of the plant disease detection system. It starts with capturing or uploading a leaf image, followed by preprocessing to enhance image quality. The processed image is then analyzed using a CNN model to classify it as healthy or diseased. Based on the result, the system identifies the disease and provides recommendations, which are displayed to the user in real time through a mobile application.



6. APPLICATIONS

- 1. Precision Agriculture:** Helps farmers monitor crop health and detect diseases early, improving yield and reducing losses..
- 2. Smart Farming Systems:** Can be integrated with IoT-based smart farming solutions for automated crop monitoring.
- 3. Mobile-Based Diagnosis:** Enables farmers to use mobile applications for real-time disease detection directly from the field.
- 4. Agricultural Research:** Assists researchers in studying plant diseases and improving disease management techniques.
- 5. Crop Quality Management:** Ensures better quality control by identifying diseases at an early stage.
- 6. Extension Services:** Supports agricultural experts and government agencies in providing timely advice to farmers.

- 7. Sustainable Agriculture:** Reduces excessive use of pesticides by enabling accurate and early disease detection.

7. ADVANTAGES

- 1. Accuracy and Early Detection:** One of the key advantages of the proposed system is its ability to detect plant diseases at an early stage with high accuracy using CNN-based deep learning techniques. This helps farmers take timely action and prevent the spread of diseases, ultimately reducing crop losses and improving productivity.
- 2. Time and Cost Efficiency:** The system significantly reduces the need for manual inspection and expert involvement, which can be time-consuming and costly. By providing instant results through automated analysis, it saves both time and resources for farmers.
- 3. Real-time and User-friendly Access:** The integration of the system with mobile applications allows farmers to easily capture and analyze images directly from the field. This ensures real-time disease detection and makes the system accessible even to users with minimal technical knowledge.
- 4. Support for Sustainable Agriculture:** By enabling precise disease identification, the system helps in minimizing the excessive use of pesticides and chemicals. This promotes environmentally friendly farming practices and supports long-term agricultural sustainability.

8. CONCLUSION

In conclusion, the proposed plant disease detection system demonstrates an effective approach to improving agricultural productivity through the use of machine learning and image processing techniques. By utilizing a Convolutional Neural Network (CNN), the system is capable of accurately identifying plant diseases from leaf images and providing real-time diagnostic results. This reduces dependency on manual inspection and enables timely decision-making for disease management.

The integration of the system with mobile applications further enhances its usability, making it accessible to farmers in both urban and rural areas. Additionally, the solution supports sustainable agricultural practices by promoting early detection and reducing the excessive use of pesticides. Overall, the proposed system offers a reliable, efficient, and scalable solution for plant disease detection, contributing to the advancement of smart farming and improved crop health management.

9. REFERENCES

- [1] M. V Suresh, D. Gopinath, M. Hemavarthini, K. Jayanthan, and M. Krishnan, "Plant Disease Detection using Image Processing." [Online]. Available: www.ijert.org
- [2] H. Wang, G. Li, Z. Ma, and X. Li, "Image recognition of plant diseases based on backpropagation networks," in 2012 5th International Congress on Image and Signal Processing, CISP 2012, 2012, pp. 894–900. doi: 10.1109/CISP.2012.6469998.
- [3] A. Ranjith Ram, "Plant Disease Detection Using Leaf Pattern: A Review." [Online]. Available: www.ijiset.com
- [4] H. Al Hiary, S. Bani Ahmad, M. Reyalat, M. Braik, and Z. ALRahamneh, "Fast and Accurate Detection and Classification of Plant Diseases," *Int J Comput Appl*, vol. 17, no. 1, pp. 31–38, Mar. 2011, doi: 10.5120/2183-2754.

- [5] D. Al Bashish, M. Braik, and S. Bani-Ahmad, "A framework for detection and classification of plant leaf and stem diseases," in Proceedings of the 2010 International Conference on Signal and Image Processing, ICSIP 2010, 2010, pp. 113–118. doi: 10.1109/ICSIP.2010.5697452.
- [6] P. Revathi and M. Hemalatha, "CLASSIFICATION OF COTTON DISEASES USING CROSS INFORMATION GAIN MINIMAL RESOURCE ALLOCATION NETWORK CLASSIFIER WITH PARTICLE SWARM OPTIMIZATION," J Theor Appl Inf Technol, vol. 60, no. 1, 2014, [Online]. Available: www.jatit.org
- [7] M. Nawaz et al., "A robust deep learning approach for tomato plant leaf disease localization and classification," Sci Rep, vol. 12, no. 1, Dec. 2022, doi: 10.1038/s41598-022-21498-5.
- [8] A. Agarwal, A. Mukherjee, G. Kumar, P. Chatterjee, T. Bhatnagar, and P. Malhotra, "Convalescent plasma in the management of moderate covid-19 in adults in India: Open label phase II multicentre randomised controlled trial (PLACID Trial)," The BMJ, vol. 371, Oct. 2020, doi: 10.1136/bmj.m3939.
- [9] S. Zhao et al., "Preliminary estimation of the basic reproduction number of novel coronavirus (2019-nCoV) in China, from 2019 to 2020: A data-driven analysis in the early phase of the outbreak," International Journal of Infectious Diseases, vol. 92, pp. 214–217, Mar. 2020, doi: 10.1016/j.ijid.2020.01.050.
- [10] G. Huang, Z. Liu, L. van der Maaten, and K. Q. Weinberger, "Densely Connected Convolutional Networks," Aug. 2016, [Online]. Available: <http://arxiv.org/abs/1608.06993>
- [11] K. He, X. Zhang, S. Ren, and J. Sun, "Identity Mappings in Deep Residual Networks," Mar. 2016, [Online]. Available: <http://arxiv.org/abs/1603.05027>
- [12] C. Shi, S. Luo, M. Xu, and J. Tang, "Learning Gradient Fields for Molecular Conformation Generation," 2021. [Online]. Available: <https://github.com/>